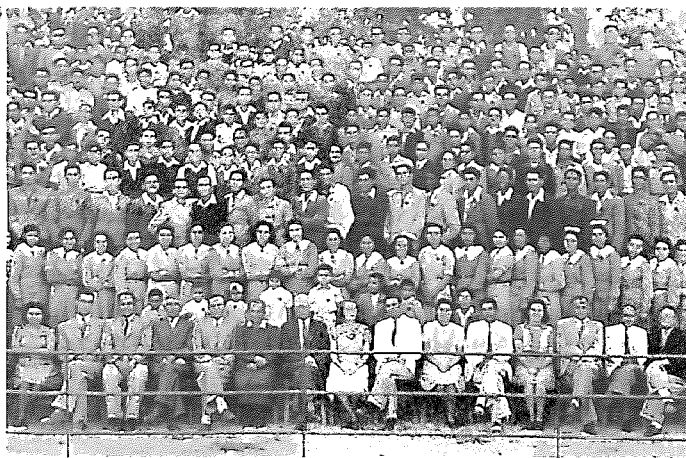




WHERE DOES
OUR
Synod's Budget
MONEY GO



Reformed Presbyterian Home for the Aged, under the supervision of the Women's Association, North Side, Pittsburgh, Pa.



Teachers and part of the student body, American Academy, Larnaca, Cyprus. Enrollment, 1944-45, 348; 1945-46, 390



Men's Ward, Lo Ting Hospital, South China. In the war the Japanese stripped this hospital of its equipment.



Reformed Presbyterian Theological Seminary, Pittsburgh, Pa.



Workers at our Kentucky Mission, and "Susie" the Ford, crossing stream in making daily rounds of the schools.

CHRI^STIAN STEWARDSHIP is the administering of that which has been entrusted to us, for the glory of God and for the honor of the Lord Jesus Christ.

Stewardship involves more than the giving of contributions to the Church; it includes also the wise and proper use of that which we set apart for our own use.

But in its relationship to the Church, Stewardship means the consecrated support of the cause of Christ with our time and effort, our prayers, and our money.

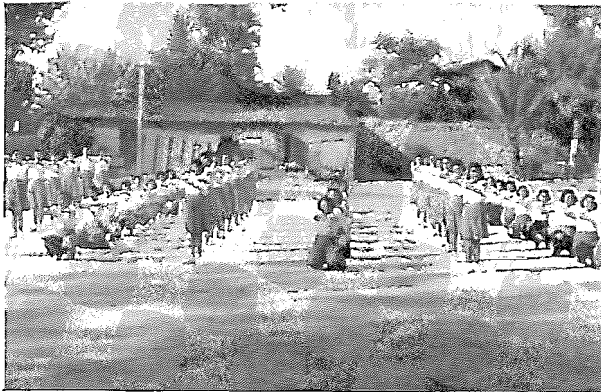
THE COVENANTER CHURCH finances her Home and Foreign Missions, her Witnessing, her Educational Institutions, and her Beneficences, through what is called "Synod's Budget."

The pictures in this folder show the Covenanter Church in action, in a number of the departments of her work that are financed by Synod's Budget. In contributing to Synod's Budget, we are helping to support these various lines of Christian activity.

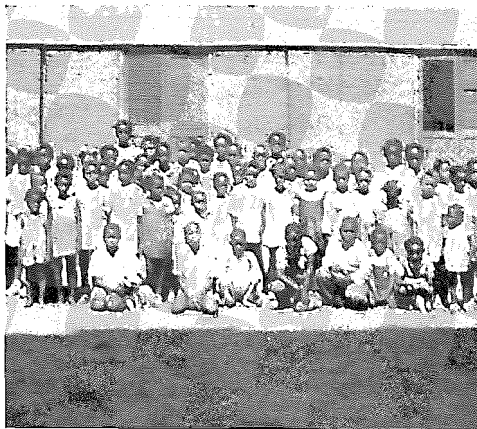
Therefore, we Covenanters have a splendid opportunity to serve the Lord with our money by contributing generously and regularly to Synod's Budget.



Part of the Pre-Ministerial Club of the year 1945-46, Geneva College, Beaver Falls, Pa.



Physical Education Class at the Girls' Academy,
Nicosia, Cyprus.



Junior Society at the Southern Mission,
Selma, Alabama.



Rev. and Mrs. D. C. Ward, and a group of Indian
Christians, Cache Creek Mission, Apache, Oklahoma.



One of the windows at our Jewish Mission,
South Philadelphia, Pa.

Synod's Budget this year is

\$72,000

This is to be apportioned as follows:

| | |
|----------------------------|-----------------|
| Foreign Missions | \$18,000 |
| Home Missions | 4,000 |
| Indian Mission | 2,000 |
| Southern Mission | 200 |
| Kentucky Mission | 5,000 |
| Witness Committee | 10,000 |
| Theological Seminary | 3,500 |
| Students' Aid | 1,500 |
| Ministerial Relief | 3,150 |
| Widows and Orphans | 800 |
| Geneva College | 16,000 |
| Covenanter Witness | 5,500 |
| Woman's Association | 2,250 |
| Total | \$72,000 |